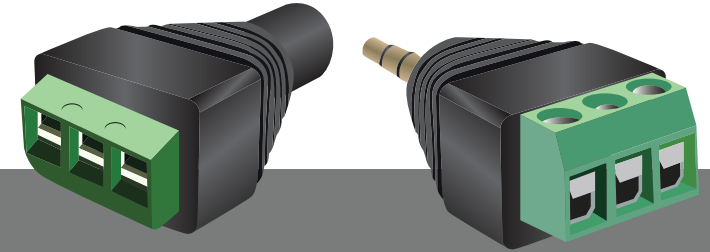




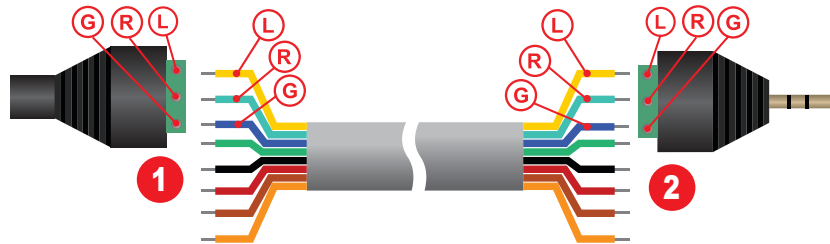
DETROIT  
**HUAFONE**

## WIRING RETROFIT ADAPTOR KIT FOR EXISTING WIRES



### HOW TO CONNECT YOUR EXISTING WIRES TO HUAFONE INTERCOMS

#### 1 CONNECTING THE RETROFIT ADAPTOR TO INTERCOM CABLE

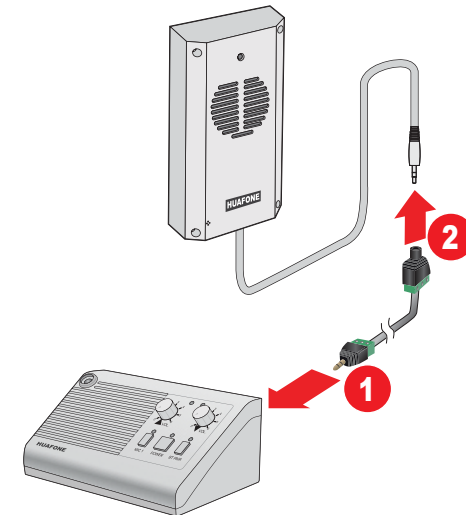


**1** SELECT ANY 3 COLORED WIRE FROM AN INTERCOM CABLE AND TIGHTEN THE TIP OF THE WIRE TO DESIGNATED SCREW HOLE.

**2** SELECT THE WIRE WITH THE SAME CONTINUITY OF THE OPPOSITE END AND PLACE IT IN THE DESIGNATED SCREW HOLE.

 USE MULTI TESTER TO CHECK THAT WIRE CONTINUITY IS THE SAME FOR EACH DESIGNATED HOLE LOCATION.

#### 2 CONNECTING THE INTERCOM CABLE WITH RETROFIT ADAPTOR TO SmartSpeaker®.



### DETROIT HUAFONE TECHNOLOGY LLC

Advance Communication Equipment Manufacturer  
Audio | Video | Wired | Wireless | Analog | IP Network

Sales and Customer Care Center  
281 Enterprise Court, Suite 100  
Bloomfield Hills, Michigan 48302 USA  
[www.huafone.com](http://www.huafone.com)  
Email: [sales@huafone.com](mailto:sales@huafone.com)  
(800) 886-5607, (248) 629-0170