

QUICK START

MODEL HF-S03B (KIT 2/2WL/2W2 - GEN 3)

REQUIRED BEFORE INSTALLATION

Before installing extension ground wires, plug speaker DIRECTLY to base station, pair headset, and get yourself familiar with the equipment first!



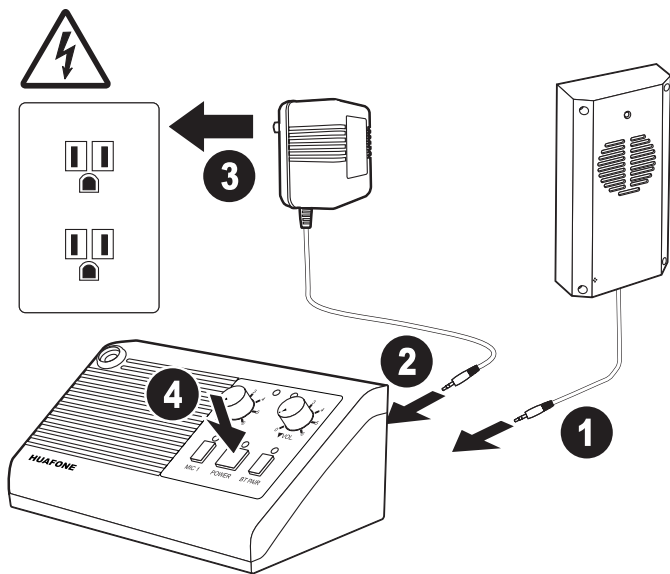
You might experience echoes between headset and speaker now during testing. It is normal. Once the speaker is far away from headset, echoes will disappear.

1

Connect **SMARTSPEAKER** (outside loud speaker) to **OUT** port on the back of **BASE STATION**, using extension wires (provided).

2

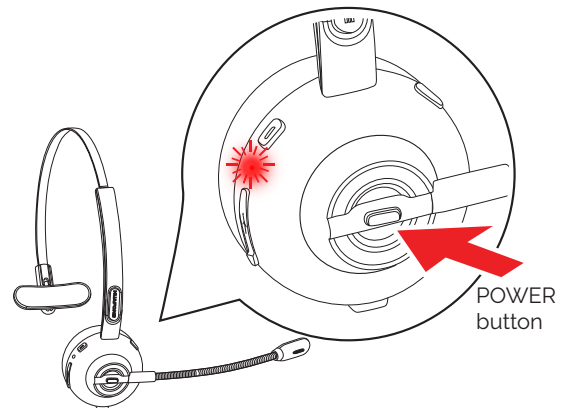
Connect **POWER SUPPLY** to **POWER** port on **BASE STATION**, turn on **BASE STATION**



3

Your system is **FACTORY PRE-PAIRED**

Press and Hold **POWER** button 1-3 seconds to turn on the pre-paired headset and it should automatically pair with the base station.



Repair Headset: HOLD DOWN "BT PAIR" button until Bluetooth LED is blinking, device is now ready for pairing.

Press and Hold 5-8 seconds to enter into pairing mode with LED Indicator Light flash alternately. When the connection is successful and the volume of headset is loud enough, you will hear a buzz sound, it means headset and base station connection is established.

