

QUICK START

REQUIRED BEFORE INSTALLATION

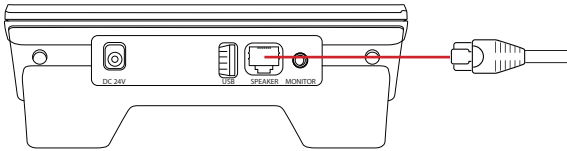
Before installing Kit 3, plug the 10' CAT 5 test cable into the Kit 3 post. Then, connect the cable into the Base Station. Use your own cable for installation.



It is normal to experience echoes between the headset and the speaker post during the SHORT cable test.

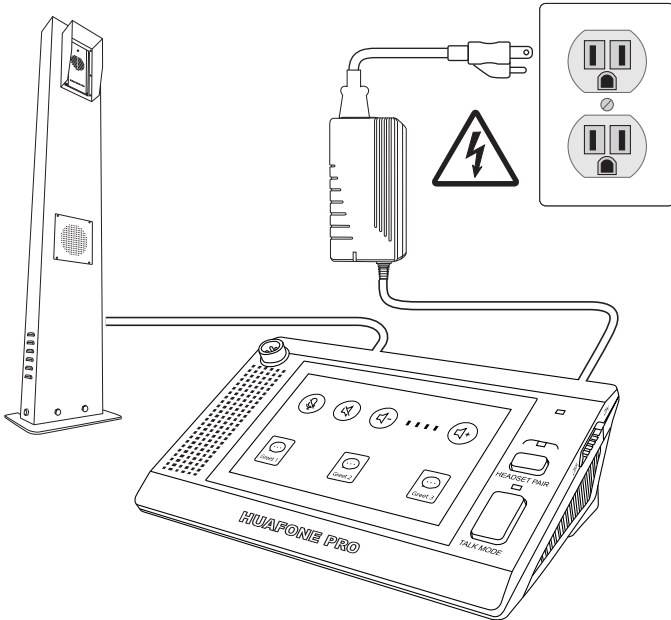
1

Connect the CAT5 cable directly into the SPEAKER port on the back of the Base Station.



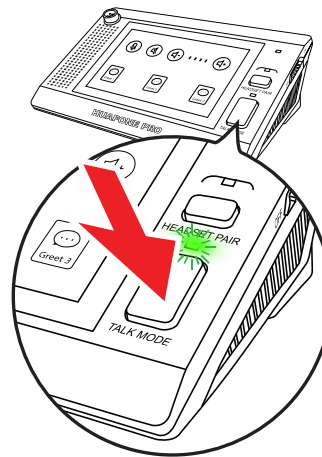
2

Connect the other end of the CAT5 cable to the Speaker Post. Connect the Power Supply into the DC 24V port on the back of the Base Station. Turn on Base Station.



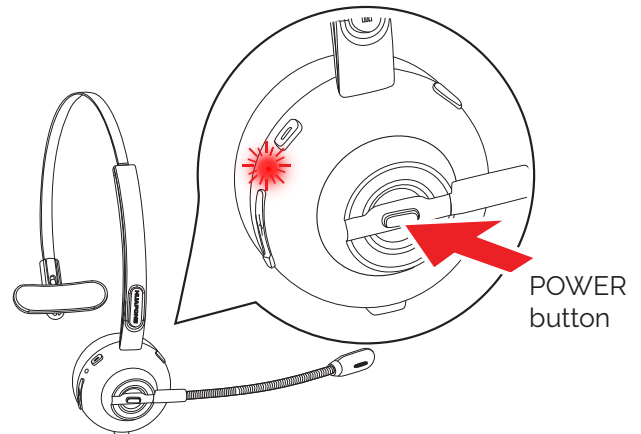
3

Your system is **FACTORY PRE-PAIRED**



On the Base station, press the TALK MODE button and the green light above it will turn on. You are now in wireless mode.

On the Headset, press and hold the POWER button located in the center of the ear piece until you hear "power on", then you will hear "your headset is connected".



RE-PAIRING YOUR HEADSET

At the same time, HOLD DOWN the "HEADSET PAIR" button on the BASE UNIT until the red LED is flashing quickly. Starting with the headset OFF, HOLD DOWN the "POWER" button on the headset until the LED is flashing blue and red. Once they are both flashing at the same time, they are in pairing mode and will connect momentarily.

